

WWW.BATONLOCKUSA.COM OPERATOR EDITON



baton



Maxi-Security™ Dimple Key Tubular Key Conventional



baton®

1-800-395-8880



Your to Security

Celebrating Over 30 Years
of Unmatched Security
and Service!

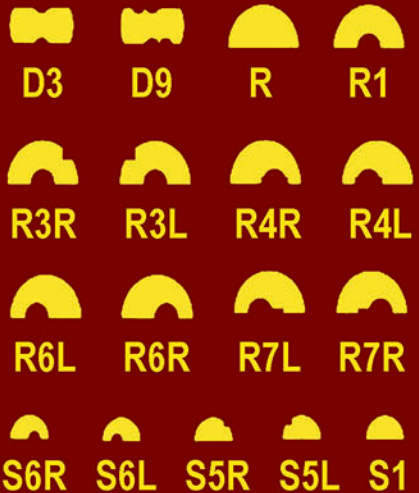
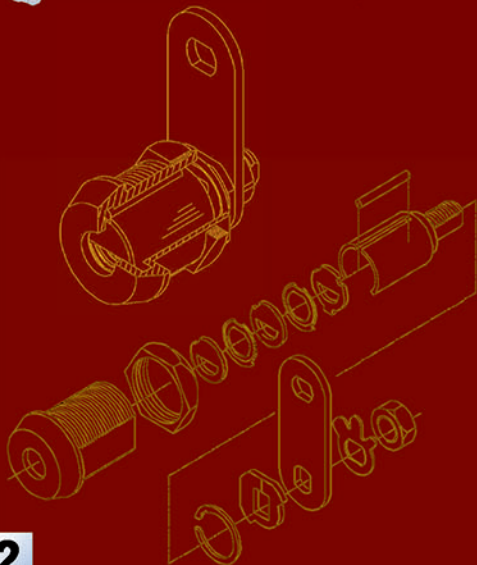
14275 Commerce Dr Garden Grove CA 92843 info@batonlockusa.com



Maxi-Security Detainer Disc System Key Profiles



- Baton's 6000 Series are available with a number of key profiles which provide different levels of security.
- There are three types of keyways available:
- Commercial Keyways - S1, S2, S4, S5. These standard key profiles are supplied at a locksmith level.
- Restricted Keyways - S6, S7, R Series, D Series. These special key profiles are available when special key security is required. Key duplication can be obtained by special order from our factory or authorized service centers only. D Series keys are made of longer lasting steel instead of nickel-silver, and they are reversible.
- Reserved Keyways - There are some key profiles that have been reserved for unique applications. Quantity orders may apply.
- Unless otherwise specified, all 6000 Series locks are assembled with standard cuts. Locks can be keyed alike, keyed different, or master keyed. For special key security, millimeter (MM) cuts are available



6080/6044: Maxi-Security Cam Locks / Plug Locks

- Triple plated hardened steel (6044,85) or brass (6086, 87, 89) body.
- NAMA Standard dimensions.
- Key removable only in the locked position.
- Available keyed alike, keyed different, or master keyed.
- Factory rekeyable.

- 6080 Camlocks: The M7x1.0 double D tail piece will accommodate any cams or accessories that meet NAMA standards.
- Supplied with a right turn 90° governor, 180° governors and left turn (special reverse key needed) available.

- 6044 Pluglocks: Fits all standard T or L handles. Spring loaded hardened steel latch. Dead Locking latch available.



6044-20



6086-00



6087-00



6089-00

6071-16 Maxi-Security Lower Payphone Locks

- Key removable only in the locked position.
- Available keyed alike, keyed different, or master keyed.
- Factory rekeyable.

- Chrome plated hardened steel housing with adjustable cam stud to match case.
- Fit 'GTE' type for services door. (Western, Interllic also available)



6071-23

6071-23 Maxi-Security Service Payphone Locks

- Key removable only in the locked position.
- Available keyed alike, keyed different, or master keyed.
- Factory rekeyable.

- Nickel plated steel parts with 6 stainless steel mounting bolts. Hardened steel cylinder housing with chrome plating.
- Fit 'GTE' type for lower coin box. (Western, Interllic also available)



6071-16

6000 Series

baton[®]
800-395-8880



6020-30

6020 Series: Maxi-Security Brass Padlocks

- Chrome plated solid brass body.
- Hardened steel shackle.
- Double ball bearing locking mechanism.
- Key removable only in the locked position.
- Available keyed alike, keyed different, or master keyed.
- All locks with exception of 30mm(*) are factory rekeyable.
- Some sizes are available with a long shackle.

**Available with an extended 2" or 4" shackle!
Please inquire when ordering.**



6020-45

6120 Series: Maxi-Security Brass Pin Locks

- Chrome plated solid brass body.
- Hardened steel locking bolt, with 3/4" mushroom head.
- Bolt diameter: 11mm. Bolt clearance: 16mm.
- Key removable in the locked position only.

6220 Series: Maxi-Security Armored Padlocks

- Chrome plated solid brass body with a hardened steel jacket
- Case hardened steel shackle.
- Shackle diameter: 11mm. Shackle clearance: 28mm.
- Double ball bearing locking mechanism
- Key removable in the locked position only.



6020-55



6120-45



6220-60

6200/6210: Maxi-Security Armored Block Locks

- Chrome plated solid brass body with a hardened steel (6200) or stainless steel (6210) jacket.
- Hardened steel locking bolt. 6200 bolt features a snap off head to prevent opening by force.
- Bolt diameter: 11mm.
- 6200 Clearance: 18x36mm.
- 6210 Clearance: 14x22mm.
- Key removable in the locked position only.

6200-80



6210-60

6273 Series: Maxi-Security Shackleless Hardened Steel Padlock

- Body is constructed from solid hardened steel.
- Specialized shackleless design provides tough bolt cutter and hacksaw resistance.
- 6 mushroom pin brass tumbler cylinder.
- Supplied with 2 keys
- Available keyed alike or keyed different.
- Available in 30mm and 50mm
- Add-on accessories include special 778 HASPs with optional anti-drill guard. Please inquire when ordering.



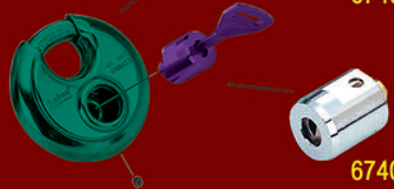
6273-30

6740 Series: Maxi-Security Space Locks

- Laser welded stainless steel case and interior construction
- Triple plated case hardened steel shackle.
- Double ball bearing locking mechanism.
- Key removable in the locked position only.
- Available keyed alike or keyed different.
- Factory rekeyable.
- Replacement cylinders are available for field replacement.



6740-70



6740-18

Field exchangeable cylinder is held in place with a hardened steel set screw which can be removed only when it is unlocked with the original key.

7000 Series

baton[®]
800-395-8880



7000-T1

7000-T2

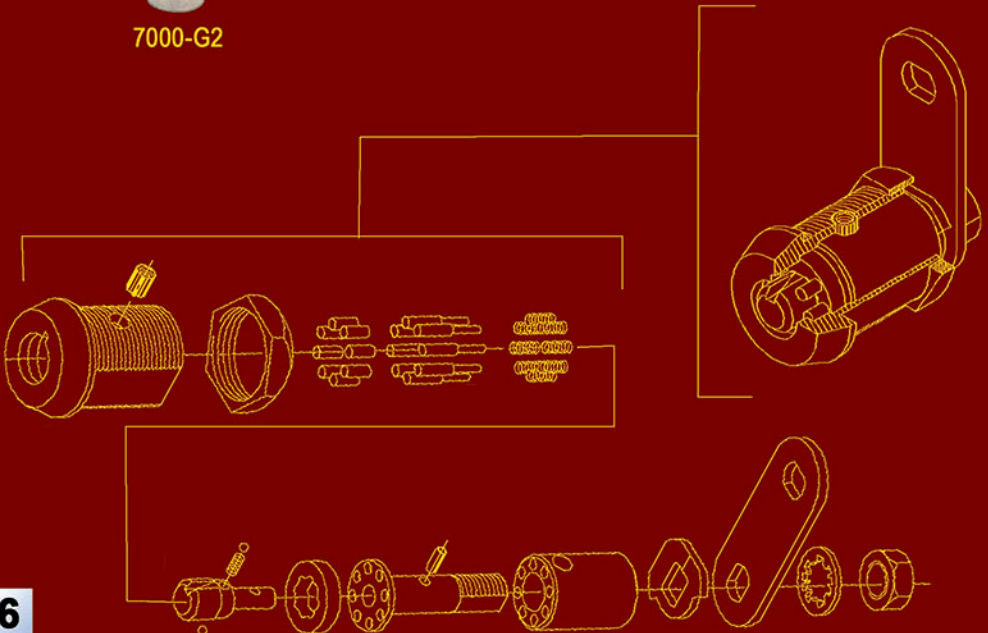


7000-GF

7000-G2

Tubular Key System Key Profiles

- Baton's 7000 Series is available with a number of key profiles which provide different levels of security.
- Unless otherwise specified, all 7000 series tubular key locks shown on the following pages are manufactured with 9.6mm diameter center standard pin profile tubular keys.
- All of the 7000 series (with exception of the 7300, 7G 7800, & 8800 series) are compatible with other manufacturer's tubular key locks and can be ordered with an existing code or a new code.
- Special key profiles are available for restricted levels of security. They are available with the standard 9.6mm keyway as well as other restricted keyway sizes. We can also adjust for unique key positions and extra pin mechanisms. Quantity order may apply.
- Locks can be keyed alike or keyed different. Master keying is applied to limited models only. Call for details.



7000 Series Tubular Customization Options

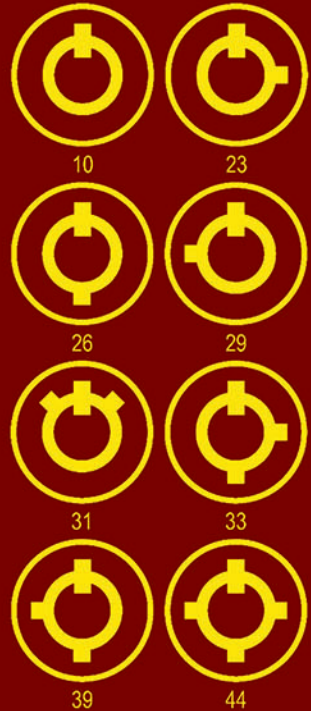
Our 7000 Tubular series is available with customization options to specialize your locks to your needs. Ask about our customization options for pricing and specifications.

Key Pull Positions

Our 7000 series locks are available with dual or more key pull positions with an additional service charge per lock. Additional key pull positions would enable more convenience to pull out the key in any position desired. Please specify how many additional pulls you would like and the positions they would be.

Offsets & Extra Pins

Our 7000 series locks are available with offsets and extra pins as well. Offsets are available for the 7 pin lock. These features will be with an additional service charge per lock. Please specify if you would like these features.





7044-10



7084-10



7085-10



7087-10



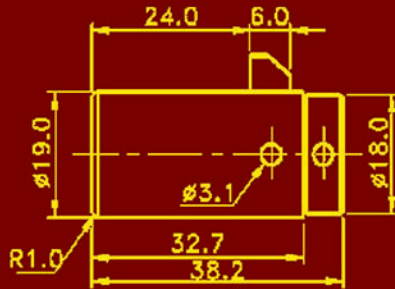
7089-10



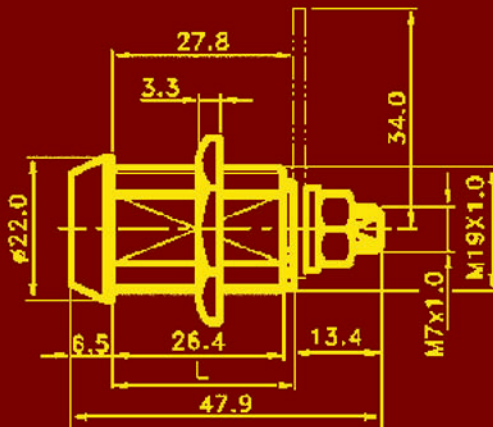
7090-10

7044/7080: Tubular Key Plug Locks and Cam Locks

- Triple plated hardened steel (7044) or brass (7084, 85, 87, 89, 90) body.
- NAMA Standard dimensions.
- Key removable only in the locked position.
- Available keyed alike, keyed different, or master keyed.
- Factory rekeyable.
- 7044 Pluglocks: Fits all standard T or L handles. Spring loaded hardened steel latch.

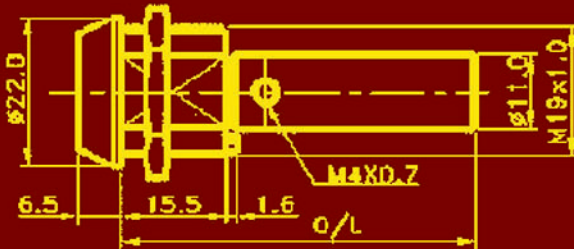


- 7080 Camlocks: The M7x1.0 double D tail piece will accommodate any cams or accessories that meet NAMA standards. Supplied with a right turn 90° governor. Left turn or 180° governors available.



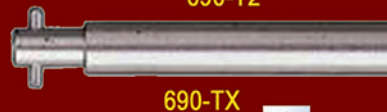
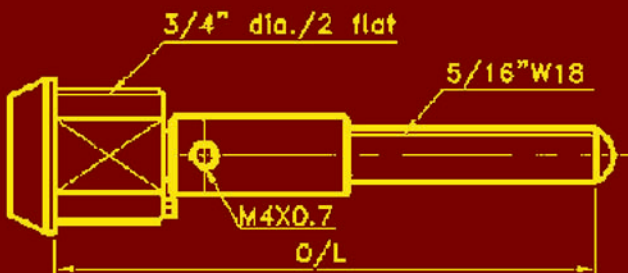
**7010 Series: Tubular Key Coupler-Style
Screw Locks**

- Designed for "beaver" style bulk vending machines.
- Steel coupler accepts 1/4" diameter threaded posts.
- Triple plated alloy housing.
- NAMA standard dimensions.
- 360° free rotation with dual key pulls for easy operation.
- Available keyed alike or keyed different.
- Factory rekeyable.



**7085 Series: Tubular Key Threaded-Style
Screw Locks**

- Various stud lengths available.
- Triple plated alloy housing.
- NAMA standard dimensions.
- 360° free rotation with dual key pulls for easy operation.
- Available keyed alike or keyed different.
- Factory rekeyable.



7300 Series: Tubular Key Bulk Vending Screw Locks

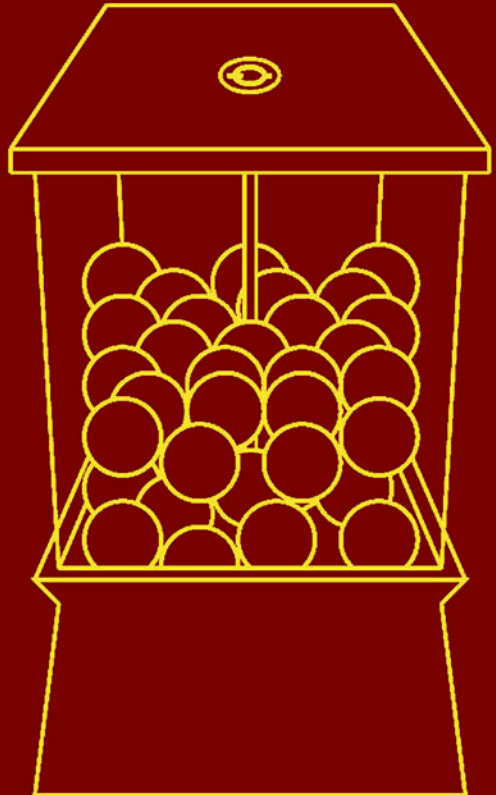


7312-26

- Designed for top-brand bulk vending machines.
- Features Baton's unique restricted 7-pin tumbler tubular key system.
- Key cuts are located on the inside of the key to prevent duplication at a locksmith level.
- Offers tens of thousands of unique key combinations.
- Patented one-piece alloy construction.
- Available keyed alike or keyed different.



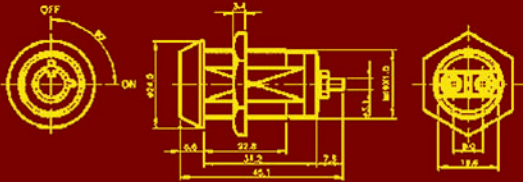
Key Cuts Inside



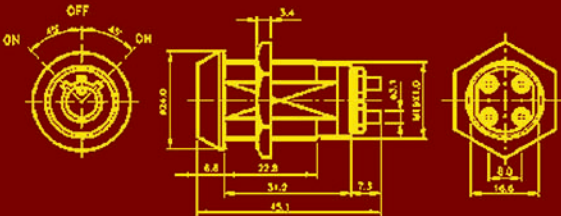
7230 Series: Tubular Key Switch Locks

- Triple plated alloy housing.
- NAMA Standard 3/4" diameter with one or two flats.
- Available keyed alike or keyed different.
- Contact rating: 4 A @ 125 VAC or 2 A @ 250 VAC
- Contact resistance: 10 mΩ max.
- Insulation resistance: 500 MΩ min.
- Dielectric strength: 1500 VAC, 1 minute

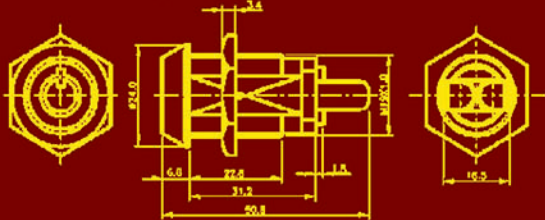
7232 Outline



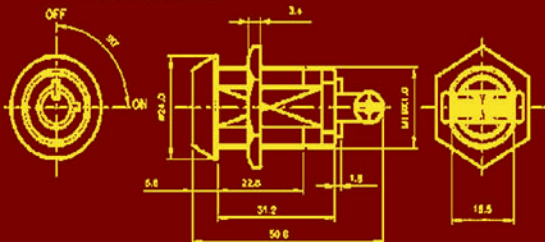
7239 Outline



7234 Outline



7235 Outline



7232-23



7239-31



7232-23W



7234-15



7235-23

7000 Series

baton[®]
800-395-8880

7760 Series: Tubular Key Brass Padlocks



7760-45

- Chrome plated solid brass body.
- Triple plated case hardened steel shackle.
- Double latched automatic re-locking mechanism.
- Key removable only in the lock position.
- Available keyed alike or keyed different.
- Factory rekeyable.
- Replacement cylinders are available for field-replacement.



7760-55



Field exchangeable cylinder is held in place with a hardened steel set screw which can be removed only when it is unlocked with the original key.



7760-16

7740 Series: Tubular Key Space Locks

- Laser-welded stainless steel case and interior construction
- Triple plated case hardened steel shackle.
- Double ball bearing locking mechanism.
- Key removable only in the locked position.
- Available keyed alike or keyed different.
- Factory rekeyable.
- Replacement cylinders are available for field replacement.



7740-70



Field exchangeable cylinder is held in place with a hardened steel set screw which can be removed only when it is unlocked with the original key.



7740-18

7273 Series: Tubular Shackleless Hardened Steel Padlock

- Body is constructed from solid hardened steel.
- Specialized shackleless design provides tough bolt cutter and hacksaw resistance.
- 6 mushroom pin brass tumbler cylinder.
- Supplied with 2 keys
- Available keyed alike or keyed different.
- Available in 30mm and 50mm
- Add-on accessories include special 778 HASPs with optional anti-drill guard. Please inquire when ordering.



7273-59

OUR NEWEST RELEASE:



7G00-TG2

7G SERIES

Problems with break-ins? Are you fighting both picking tools and the price of high security?

Our 7G series lock features a patented lock with LUGS combined with specialty keys, making unauthorized key duplication difficult and picking nearly impossible. With its hardened steel anti-drill design, you can rest easy knowing your investment is safe from forced entry.



7G85



7G87

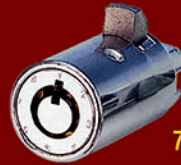
- The 7G & 7G 4-Way U-Change high security camlocks have been constructed with LUGS on the entrance to the lock. This prevents the use of common picking tools as the pick can not enter the lock.
- The keys for the 7G camlock are cut with 2 grooves to bypass the LUGS, offering up to 600,000 unique key combinations.
- Triple plated alloy housing.
- NAMA standard 3/4" diameter with 2 flats.
- Standard single-pull camlocks have a 90° rotation with keys removable in the locked position only.
- The M7 x 1.0 double 'D' tail piece will accommodate any cams or accesories that meets NAMA standards.
- Available keyed alike or keyed different.
- Factory rekeyable.



**7800 Series: U-CHANGE Field-Rekeyable
Locks**



- Features Baton's patented U-CHANGE 8-pin, tubular key system.
- Quickly rekey the lock to any of the 8 combinations using a change key without removing and reassembling the lock.
- Available keyed alike or keyed different.
- 7844 Pluglocks: Meets NAMA standards. Same construction as our 7044 Series.
- 7880 Camlocks: Meets NAMA standards. Barrel and housing is constructed of chrome plated hardened steel instead of brass.
- 7860 Padlocks: Same construction as our 7760 series.
- 7840 Space locks: Same construction as our 7740 series.



7844-10



7885-10



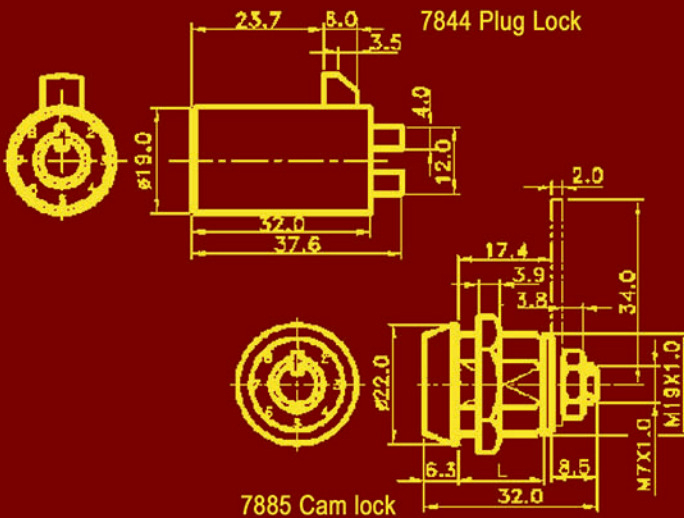
7860-45



7840-70



7800-SET



8800 Series

baton[®]
800-395-8880



8844-10



8885-10



8860-45



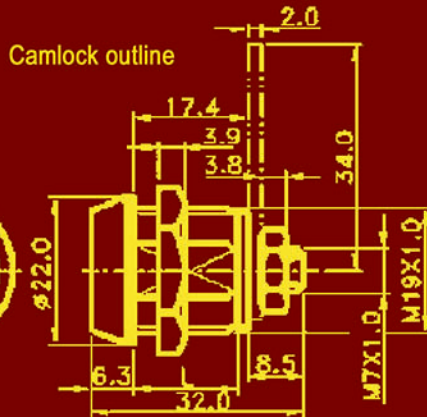
8840-70



8800-SET

8800 Series: U-CHANGE PLUS Field-Rekeyable Locks

- Features Baton's patented U-CHANGE PLUS 12-pin tubular key system.
- Quickly rekey the lock to any of the 12 combinations using a change key without removing and reassembling the lock.
- Driverless design and unique keyway allows for maximum protection against lock picking.
- 8844 Pluglocks: Meets NAMA standards. Same construction as our 7044 series.
- 8880 Camlocks: Meets NAMA standards. Barrel and housing is constructed of chrome plated hardened steel instead of brass.
- 8860 Padlocks: Same construction as our 7760 series.
- 8860 Space locks: Same construction as our 7740 series.



5000 Series

Dimple Key System Key Profiles

- Baton's 5000 series is available with a number of key profiles which provide different levels of security.
- There are three types of keyways available:
 - Commercial keyways:
These standard key profiles are supplied without restriction. Key duplication may be obtained on a locksmith level.
 - Restricted keyways:
These special key profiles are available when special key security is required. Key duplication can be obtained by special order from our factory or authorized centers only.
 - Reserved keyways:
There are some key profiles that have been reserved for unique applications. Quantity order may apply.
- Locks can be keyed alike, keyed different, or master keyed.



5000-L7



5000-LT7



5100



5000-M5



5500 Series featuring our changeable lock.

5000 Series

baton[®]
800-395-8880



5044

5044/5050/5060 Series: Plug Lock & Cam Locks One Row Pins

- Features one row 6 pin tumbler brass cylinder system.
- The lock is supplied with a right turn 90° rotation. Left turn rotation can also be ordered
- Locks can be keyed alike, keyed different, or master keyed either to your existing code or your new code.



5055

5044 Series: Plug Lock

- Copper/Nickel/Chrome triple finished hardened steel housing.
- Features spring-loaded powder metal latch action.
- Fits all standard T or L handles.



5057

5055 Series: Cam Lock

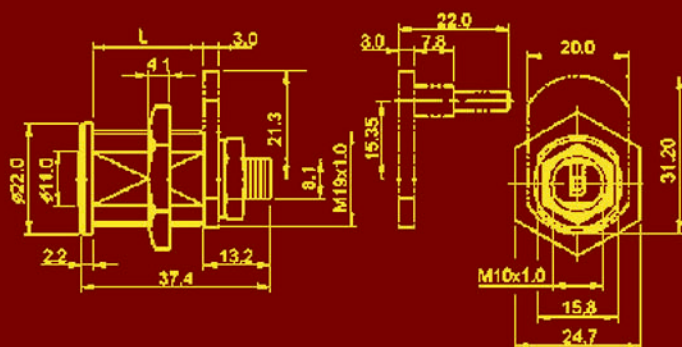
- Key can be removed on locked position only.



5067

5065 Series: Cam Lock

- Key can be removed on both locked and unlocked positions.



5600 Series: Maxi-Security Plug Locks, Cam Locks Two Row Pins

- These maxi-security plug locks, cam locks, and pay phone locks are featured with a hardened steel drill-proof cover.
- With two 90° cross rows 9 pin tumbler brass cylinder system.
- The lock is supplied with a right-turn 90° rotation. However, the 180° rotation governor is available.
- Locks can be keyed alike, keyed different, or master keyed.



5644



5685



5687



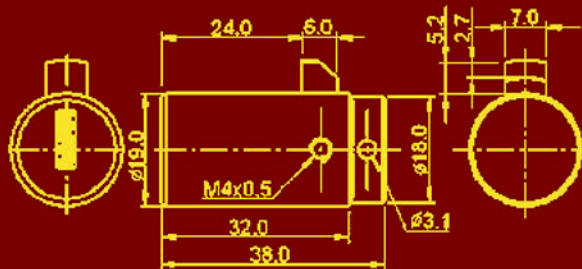
5689

5644 Series Plug Lock

- Copper/nickel/chrome triple finished hardened steel housing
- Featuring spring-loaded hardened steel action.
- Key can be removed on locked position only.
- Fits all standard T or L handles.

5685/5687/5689 Series Cam Lock

- Cam lock is made out of selected brass with copper/nickel/chrome triple finish.
- Standard 3/4" diameter with 2 flat
- Features two vertical row pins
- Meets NAMA standards
- Key can be removed in locked position only.



700 Series

baton[®]
800-395-8880



740-16

740 Series: Economy Cam Locks

- Constructed from die cast alloy with a stainless steel cap.
- 6-pin brass disc tumbler cylinder.
- Key removable only in locked position with a 90° rotation.
- Optional 180° governor, with key removable in both positions.
- The M7x1.0 double D tail piece will accommodate any cams or accessories that meet NAMA standards.
- Available keyed alike or keyed different.
- Supplied with 2 keys per lock.



740-22

741 Series: Thumb Turn Cam Locks

- Constructed from nickel-plated die cast alloy.
- Supplied with a 31mm straight cam.



740-28

791 Series: Show Case Locks

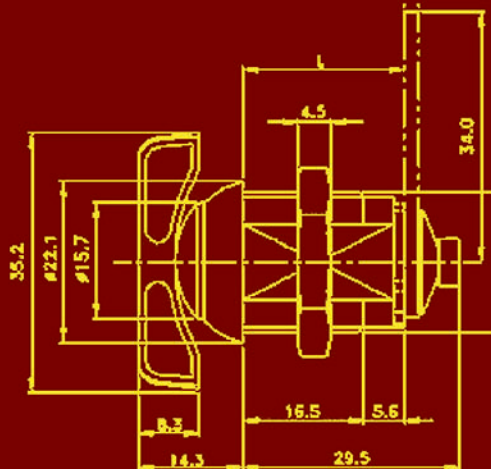
- For glass doors with a thickness of 10mm or less.
- Constructed of chrome-plated alloy.
- 4-pin disc tumbler locking mechanism.
- Supplied with 2 keys per lock. Keyed alike only.



741-16



791-55



761 Series: Heavy Duty Brass Padlocks

- Body is constructed from solid brass with stainless steel and brass inner mechanisms.
- Rust-proof stainless steel shackle.
- Double spring half-half loaded latch locking mechanism.
- Anti-pick 5 mushroom pin brass cylinder.
- Available keyed alike, keyed different. 50mm (2") lock available master keyed.
- Keyed alike locks are engraved with a red warning message on the brass body.
- Key removable in both locked and unlocked positions.
- 40 and 50mm locks available with an 100mm shackle.



766 Series: Heavy Duty Rekeyable Brass Padlocks

- Constructed from the same materials as our 761 series.
- Cylinder is drilled for up to 6 pins.
- Pin kits and unassembled sets for locksmiths and service centers available separately.
- Available in many keyways, call for availability.



768 Series: Magnetic Padlocks

- Body is constructed from chrome plated die cast alloy.
- Chrome-plated steel shackle.
- 4 magnetic steel tumblers.
- Supplied with 2 magnetic keys.
- Available in 2 sizes



700 Series

baton[®]
800-395-8880



780 Series: Laminated Steel Padlocks

- Body is constructed of galvanized steel plates with 8 rivets for security.
- Triple plated hardened steel shackle.
- Double ball bearing locking mechanism.
- “Master” style 4-pin keyway (786) or a “Yale” style 5-pin mushroom pin keyway (787).
- Available keyed alike or keyed different.
- Keyed alike locks are supplied with one key per lock.
- Keyed different locks are supplied with two keys per lock.



770 Series: Solid Brass Block Locks

- Body is constructed from solid brass with brass inner mechanisms.
- Triple plated case hardened steel locking bolt.
- Spring-loaded ball bearing locking mechanism.
- Anti-pick brass mushroom pin tumblers.
- Keyed alike locks are supplied with one key per lock.
- Keyed different locks are supplied with two keys per lock.



778 Series: Shackleless Hardened Steel Padlocks

- Body is constructed from hardened steel.
- Specialized shackleless design provides tough bolt cutter and hacksaw resistance.
- 6 mushroom pin brass tumbler cylinder.
- Supplied with 2 keys per lock.
- Available keyed alike or keyed different.



700 Series

773 Series: Standard Space Locks

- Laser-welded stainless steel case and interior construction
- Triple plated case hardened steel shackle.
- Double ball bearing locking mechanism.
- Brass cylinder with 4 (~060) or 5 (~070) pin tumblers.
- Key removable in the locked position only.
- Available keyed alike or keyed different.
- Colored lock body (BKA only) or locks with dust cover (CKD only) are available. Please specify when ordering



773-070



773V-070

775/776 Series: Shackle Protected Padlocks

- Solid nickel-plated brass (775) or solid stainless steel (776) body with a satin finish.
- Triple plated hardened steel (775) or stainless steel (776) shackle.
- Ball bearing locking mechanism.
- Chrome plated 5-pin tumbler cylinder.
- Key removable in the locked position only.
- Available keyed alike or keyed different.



773-070-B, -G, -Y, -R

781 Series: ZiMag Re-keyable Padlocks

- Body is constructed from zinc alloy.
- Specialized body for easy rekeying.
- 5 mushroom pin brass tumbler cylinder.
- Supplied with 2 keys per lock.
- Available keyed alike or keyed different.
- Available in 40mm or 50mm sizing, please specify when ordering.
- Colors:



775-40

775-60



781SAB50-Color



700 Series

baton[®]
800-395-8880

760-40



P760-40-A1

760 Series: Solid Brass Pin Locks

- Body is constructed from solid brass with brass inner mechanisms.
- “Medeco” style 5-pin brass disc tumbler cylinder.
- Key removable in locked and unlocked positions.
- Available keyed alike only.
- Supplied with 2 keys per lock.
- Optional hardened-steel pin available in two sizes.
- Optional shackle guard available.



764-50

764-40

764 Series: Economy Brass Padlocks

- Body is constructed from solid brass with brass inner mechanisms.
- Chrome-plated steel shackle.
- Spring-loaded latch locking mechanism.
- 3 or 4 pin brass cylinder.
- Supplied with 3 nickel plated brass keys.
- Key removable in locked and unlocked positions.
- Available boxed-keyed-alike (BKA)

786FD-40



786FD-50

786FK-40



786FK-50

786FD/FK Series: Weatherproof Padlocks

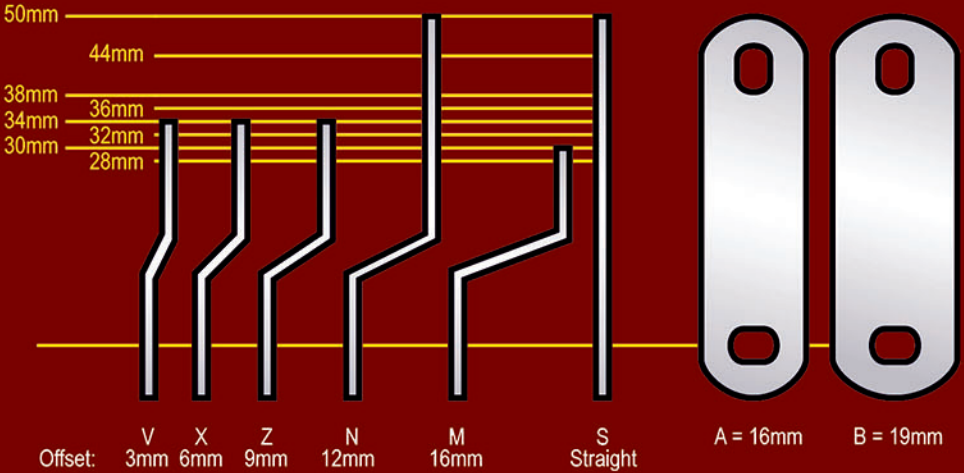
- Zinc plated laminated steel plates with 8 rivets for security.
- Copper/nickel/chrome triple-plated case hardened steel shackle. FK series features a 2” extended shackle.
- Long body and shackle are encased in a colored plastic cover for protection from humid and sandy climates.
- Double ball bearing locking mechanism.
- Supplied with 2 nickel-plated brass keys per lock.
- Available boxed-keyed-alike (BKA) or carded-keyed-diferent (CKD)

690 Series: Cams

- We provide a wide range of straight, cranked, and special purpose cams.
- The standard range of cams in stock is illustrated below. We can also manufacture cams to meet your specific requirements (call for details).

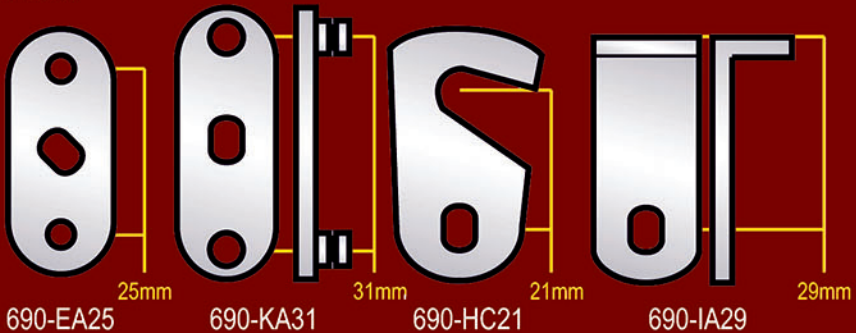
Cam Styles

Cam Widths



To order cams, please specify the letter for the cam style, followed by the letter for the cam width, and finally the effective length in mm (measured from hold to end). Ex: 690-MB34 [M - style; B - width; 34 - effective length]

Special Cams



We customize cams and accessories to your specific and unique needs. Please call to inquire about our services.

600 Series

691 Series: Security Collars & Washers

- Security Collars: Reduces cam lock projection. Gives extra protection from prying on exposed lock shoulder.

691-25



Security collar; hardened steel
dia out: 19/16" dia in: 3/4"
projection: 1/16" height: 1/4"

691-28



Security collar; hardened steel
dia out: 1-3/8" dia in: 3/4"
projection: 1/16" height: 5/16"

691-29



Security collar; hardened steel
dia out: 1-3/8" dia in: 3/4"
projection: 3/16" height: 7/16"



691-20

Anchor plate
2-1/4 x 1 x 1/32"

- Washers: For various mounting applications.

691-21



Spur washer, plated steel
dia out: 9/8" dia in: 3/4"
projection: 3/64" height: 3/64"

691-22



Flat washer, plated steel
dia out: 17/16" dia in: 3/4"
projection: 3/64" height: 3/64"

691-24



Tension washer, spring steel
dia out: 7/8" dia in: 3/4"
projection: 1/64 height: 1/8"

691-04



Spacer ring, plated steel
dia out: 7/8" dia in: 3/4"
projection: 5/32 height: 5/32"

695/697 Series: Bar Hasps & Security Game Bars

- Constructed from heavy duty steel with a black finish.
 - Provides excellent protection against machine break-ins.
 - Complete with hardware.
-
- Bar Hasps: Accommodates any size padlock, block lock, or pin lock with a shackle diameter of 9/16" or less.
 - Available in three models.
-
- Security Game Bars: Designed to protect cash doors.
 - Available in five types of various lengths.

695-G04
Bar Hasp 3mm thick



695-G05
Bar Hasp 4mm thick



695-G07
Bar Hasp 4mm thick
with shackle guard



697-B#
Game Bar
Offset



697-F#
Game Bar
Flat



697-D19
Game Bar
Double Door
16 x 9.5"



697-C11
Game Bar
Cranked 11"



697-P16
Game Bar
Boxed 16"



600 Series

baton[®]
800-395-8880



693-L25

693 Series: Security Hasps

- Constructed from 1/4" thick plated hardened
- Back plates and mounting hardware included.



694-21

694 Series: Shackle Guards

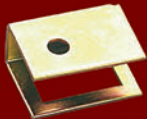
- Constructed from heavy gauge plated hardened steel for tough bolt cutter and hacksaw resistance.
- Available in four models.



694-28

695 Series: Game Hasps

- Constructed from 5mm thick heavy duty steel with a black finish.
- Provides excellent protection against machine break-ins.
- Interior bracket guards against pulling the lock out of the game cabinet.
- Fits Baton's 7085-44 screw lock or any other 360° turn cam lock of 3/4" diameter with 2 flat sides.
- Available in two models.



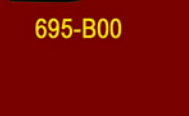
694-35



694-45



695-F00



695-B00

778H Series: Shackleless Padlock Hasps

- Constructed from hardened steel for maximum protection.
- Choose from downward opening (200), or sideway opening (210).
- Also available with optional drill guard for sideways opening. (210G)
- Fits Baton's 7273 shackleless padlock series.
- Bolts and accessories provided for easy install.



778H-HASPS-200



778H-HASPS-210



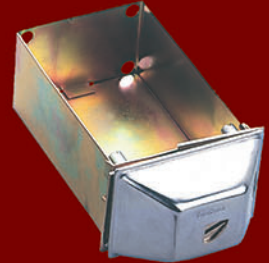
778H-HASPS-210G

600 Series: Coin Vaults

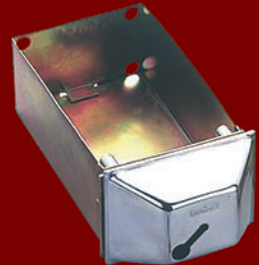
- Specially designed to accept a wider variety of locks meeting the NAMA standard.
- The universal coin vaults are available assembled with your choice of lock.
- An unassembled kit can be ordered for you to assemble with your own locks.
- Three models available:
 - 600 Series: Designed to be used with Baton's 6086, 6087, 7085, 7087, 740-22, or any other manufacturers' locks with a center positioned keyway.
 - 610 Series: Designed to be used with "Medeco" high security cam locks or any other off-center position keyway locks.
 - 620 Series: Designed to protect a tubular key lock from conventional lock picks. Recommended lock models include Baton's 7084 cam lock or any other similar short tubular key cam lock.



600



610



620



600 Series

baton[®]
800-395-8880



688-T31



688-S115



688-S170

688 Series: T-Handles

- Handle covers are comprised of die-cast alloy and have a chrome-plated stipple finish for scratch resistance.
- Meets NAMA standards.
- Accepts standard and long plug locks which meet NAMA specifications.
- Recommended plug locks:
 - 6044 Maxi-Security Plug Lock
 - 7044 Tubular Key Plug Lock
 - 7844 & 8844 U-Change Plug Locks
- Optional T-Handle anti-drill plate (stock #: 688-S115P) is available. Provides anti-drilling protection without changing the exterior appearance. Call for availability.
- 688-Sxxx: Standard screw type, with a 1/2" W13 threaded stud. 3.5 x 1.5 x 2.5"
- 688-T64: Standard cam type. 3.5 x 1.5 x 2.5"
- 688-T31: Hook cam type, designed for limited space usage. A 3/32" thick plastic spacer is supplied.

Terms

Our prices are based on FOB Garden Grove. Net 10 or net 30 days can be arranged upon approval for an open account, other accounts will be prepaid or COD. Past due accounts are subject to a monthly finance charge of 1.5% until payment is received. No further orders will be processed until the account is brought back to the current balance. Service charges will apply to returned checks.

Freight Policy

Unless specified by the customer (at additional charge), all orders are shipped by the courier and route of our choice, generally UPS Ground. Claims for loss or damage in transit should be made by your company against the courier. All goods are shipped at the customer's risk; our responsibility ceases upon delivery in good order to the courier.

Receipt and Returned Merchandise Policy

Any discrepancy regarding the shipment must be claimed within 5 days after the merchandise has been received. Any returned item must be received within 30 days of the invoice date. An RMA number must be obtained from our Customer Service department prior to the merchandise being returned. The returned goods must be in original packaging and in a sellable condition. There will be a 25% restocking charge and a freight charge on merchandise returned or refused for reasons other than a defect or incorrect shipment. No special order items can be returned, other than a factory defect.

Orders and Cancellations Policy

Cancellations will not be processed without written confirmation from the customer. Any order shipped before the written request of a cancellation or change to the order will incur handling and restocking charges as stated above. Special orders may not be cancelled after a period of three days from the date of the order. Partial order contracts may be accepted from the customer and paid for according to the contract prices and terms. By placing an order with Baton, you agree to the terms outlined in this document. Baton is not responsible for any loss or damage due to delays, or extended delivery dates of goods.

Limited Warranty

Unless otherwise stated within the catalog, Baton warrants that its products will be free from defects in materials and workmanship (excluding oxidation or discoloration) for a period of one year from the date of purchase. Our only obligation will be to replace the defective product(s) or parts upon inspection, together with proof of purchase dated within the warranty period.

We assume no liability for any labor charges regarding the removal or reinstallation of the products, nor will we cover any freight, postage or handling expenses regarding the product. Damage caused by accident, misuse, abuse, or improper installation are not covered by this warranty. Except as expressly stated herein, there is no warranty, whether expressed or implied, provided by Baton. No other person has authority to assume any obligation or liability in addition to this warranty.

Baton Lock & Hardware Co., Inc.
14275 Commerce Drive,
Garden Grove, CA 92843

baton[®]
1-800-395-8880



Your

to Security

*Celebrating Over 30 Years
of Unmatched Security
and Service!*

BULK RATE
U.S. POSTAGE
PAID
GARDEN GROVE
CALIFORNIA
PERMIT NO. 110

Save money not Security

Paying a fortune for Just locks?

Baton's bailout package is here!

Save up to 60% compared to other company's compatible products. Don't delay in this TOUGH economic time. We can SAVE you money no matter who you bought from while enhancing your security.

Bring your keys and we will match it!

Phone: (714) 265-3636

Fax: (714) 265-3630

Web: www.batonlockusa.com

E-mail: batonlock@aol.com

High security keys
with exclusive codes
register to your account

bridge your
system for
1 key fits all
to save you
time

hardened steel
spinner disk
prevents
drilling
and rust

2.2 Million Inventory
factory direct for
fastest service
in the industry

Service center
throughout the world
to customize for your needs

Padlock



Camlock



Pluglock



Disk lock



7000



6000



5000



700



Pucklock



Pin Lock



bulk vending



Block lock



Bar Hasps



T-Handles



Coin Vaults

